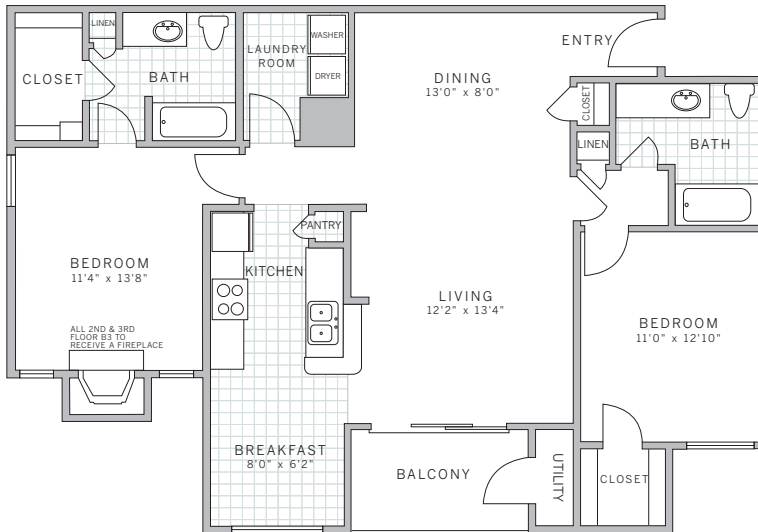


B3 | 1190 sq ft



features

- large utility room
- pantry in kitchen
- direct access garage on 1st floor suites
- balcony
- fireplaces in bedroom on 2nd and 3rd floors
- two linen closets
- large window in breakfast room and kitchen area
- eat in kitchen
- dressing table

korman communities **somerset**

199 pierce street : somerset, new jersey 08873