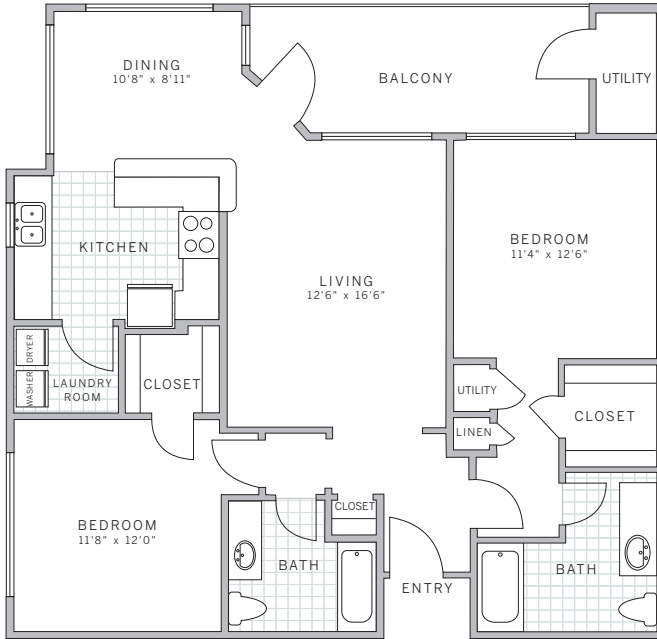


two bedroom two bath suite:
rate:

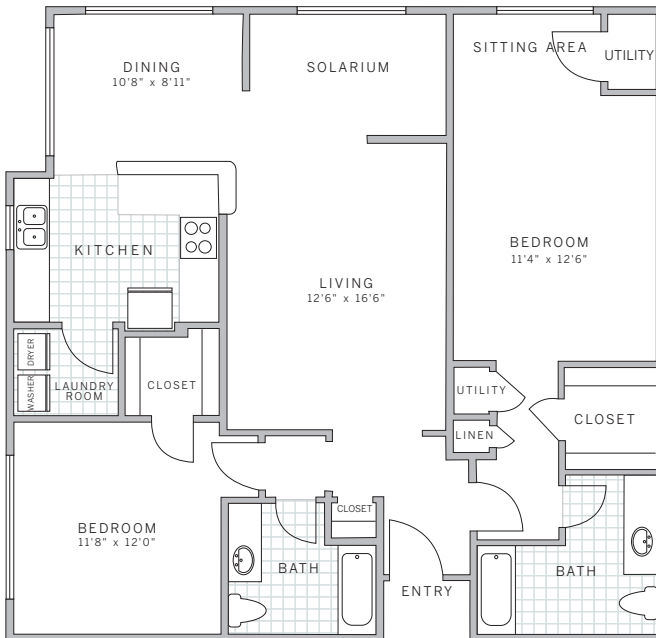


features

- oversized balcony
- wrap around kitchen
- windowed dining area
- window in kitchen
- hollywood dressing/bath area
- arched doorways/entry areas
- garden tubs on 2nd and 3rd floors in master bath

B2 | 1123 sq ft

B2 | Solarium | 1277 sq ft



features

- solarium
- large sitting area in bedroom
- wrap around kitchen
- windowed dining area
- window in kitchen
- large utility closet
- linen closet
- arched doorways/entry areas
- garden tubs on 2nd and 3rd floors in master bath

korman communities somerset

199 pierce street : somerset, new jersey 08873